

COOPERATIVE CONNECTIONS



(left to right) Rosebud Electric Directors Dennis Purvis and Boyt Young and Butte Electric CEO Matt Sleep serve a homemade meal to legislators, state employees and Capitol visitors in South Dakota State Capitol.

Photo by Jacob Boyko

Co-ops at the Capitol

Every Voice Counts
Pages 8-9

Easements Bring Safety and Reliability
Pages 12-13

Summary About Directors

General Powers

A board of nine directors manages the business and affairs of the Cooperative. The board exercises all of the powers of the Cooperative except those conferred upon or reserved to the members by law, the articles of conversion or the bylaws. The board hires a general manager to run the business on a day-to-day basis.

Districts

The Cooperative's service area is divided into nine districts, each with defined boundaries. One director represents each district.

Nominations

Any fifteen (15) or more members of the same district affixing their signatures to a petition provided by the Cooperative can nominate a qualified person as a candidate for director from their district.

Director Qualifications

No person shall be eligible to become or remain a director or to hold any position of trust in the Cooperative who:

- Is not a member and bona fide resident physically residing in the area served or to be served by the Cooperative and in the district which the member is to represent; or
- Is in any way employed by or financially interested in a competing enterprise or a business selling electric energy or supplies to the Cooperative; or
- Is an employee of the Cooperative or was an employee of the Cooperative and less than three (3) years have passed since the last day of employment; is a close relative of an employee of the Cooperative; or is a close relative of an incumbent director. As used by these bylaws, close relative means a person who, by blood or in-law, including half, foster, step and adoptive kin, is either a spouse, child, grandchild, parent, grandparent, brother, sister, uncle, aunt, nephew or niece of the principal; or
- Does not have the legal capacity to enter into a binding contract.

Election

The Cooperative's members attending the annual membership meeting elect directors by printed ballot. The candidate from each district receiving the highest number of votes is declared the elected director from the particular district. Drawing by lot resolves tie votes.

Tenure

Elected directors serve a three (3) year term. Upon election, directors serve until the annual membership meeting of the year in which their terms expire or until their successors are elected and qualified.

Compensation

Directors do not receive any salary for their services as directors. Directors do receive a fixed sum and expenses while on Cooperative business as a member of the board.

No director receives compensation for serving the Cooperative in any other capacity, nor does any close relative of a director receive compensation for serving the Cooperative, unless the payment and amount of compensation is specifically authorized by a vote of the members or the service by such director or close relative is certified by the board as an emergency measure.

Board Director Candidates Sought

Codington-Clark Electric Co-op Secretary Roy Gjerde announces nominating petition forms are available from the Co-op's office in Watertown for any co-op member residing in District 4, 5 or 8 interested in serving on Codington-Clark's board of directors.

Deadline for submitting nominating petitions is 4:30 p.m., Thursday, February 19, 2026. A valid petition needs the signatures of at least 15 members from the district. Secretary Roy Gjerde will only accept petition forms supplied by the Co-op.

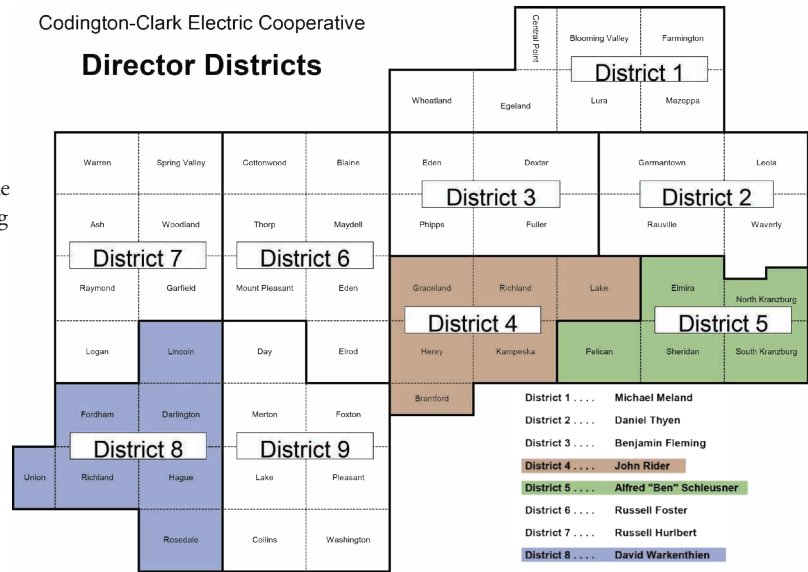
The names of qualified candidates will appear on the director election ballot at the Co-op's annual membership meeting scheduled for Tuesday, March 31, 2026, at the Codington County Extension Complex in Watertown.

District 4 includes all area served or to be served in Lake, Richland, Graceland, Henry and Kampseska townships in Codington County; Brantford Township in Hamlin County; and all area south of the above named townships that adjoins the boundary line of Codington County. John C. Rider, Brantford Township, currently represents District 4, and has announced he will not be seeking reelection.

District 5 includes all area served or to be served in Kranzburg, Elmira, Pelican and Sheridan townships in Codington County and all area east and south of the above named townships that adjoins the boundary line

Codington-Clark Electric Cooperative

Director Districts



of Codington County. Alfred "Ben" Schleusner, Kranzburg Township, currently represents District 5.

District 8 includes all area served or to be served in Lincoln, Darlington, Fordham, Richland, Hague and Rosedale townships in Clark County and all area west and south of the above townships that adjoins the boundary line of Clark County. David M. Warkenthien, Lincoln Township, currently represents District 8, and has announced he will not be seeking reelection.

Capital Credits, 2026 Rates and Board Seats



Dave Eide
General Manager
C. 605-350-2765
davee@ccelectric.coop

Capital Credits Retired

At the November board meeting action was taken to make a general retirement of capital credits to the membership. The board chose to retire the entire year 2004 capital credit balance of \$495,007. The retirement checks were mailed to members in December that purchased electricity from the cooperative during 2004. The retirement amount for each member is based on the number of kilowatt-hours purchased per member during this timeframe.

When deciding on retirement amounts the board takes into account capital credit retirements that we receive from other cooperatives that we did business with during the year.

We received a capital credit retirement from East River Electric in May 2025 in the amount of \$116,045 and a retirement from Basin Electric in December 2025 in the amount of \$225,996. A testament to the cooperative business model in action.

2026 Rates

In the office we've been busy preparing the 2026 operating budget. As I've mentioned in recent newsletter articles, we have been experiencing upward rate pressure from Basin Electric and the Western Area Power Administration (WAPA). Last year at this time we received a 7.6% rate increase from our power supplier East River Electric that was passed onto them by WAPA and Basin Electric. Fortunately, we were able to absorb that rate increase this year through use of our margin stabilization plan.

For 2026, East River will be passing on a 9.4% rate increase to Codington-Clark. The majority of next year's rate increase is coming from Basin Electric. Some of the reasons for Basin's increase are due to inflation, investment in new generation, investment in new transmission, Dakota Gasification Company losses and regional transmission organization rules changes that deal with generation planning reserves.

At the December board meeting we will present our 2026 operating budget which shows a significant shortfall. We have completed cost of service studies so we can see what each rate class contributes to cost and revenue. We have also prepared a new rate schedule to show the board with some recommendations. Once again, we also included use of the margin stabilization plan to curb the rate increases that we plan to show the board.

Projections from our power suppliers show another rate increase coming in 2027. Our plan right now is to increase rates as slowly as we can each year for the next three years.

Board Seats

Director Johnny Rider and director Dave Warkenthien have announced they will not seek re-election to Codington-Clark's board of directors when their terms expire on March 31, 2026, the date of the Co-op's next annual meeting. I mention this now as petitions are available at the office for anyone that might be interested in running for the board. Governance and guidance are very important for the success of the cooperative. I hope you'll consider.

As always, please feel free to contact me anytime. I'd be happy to visit with you: 605-350-2765 or davee@ccelectric.coop. Thank you.

COOPERATIVE

CONNECTIONS

CODINGTON-CLARK ELECTRIC

(USPS 019-073)

Board of Directors

President:

Alfred "Ben" Schleusner, Watertown

Vice President:

Daniel Thyen, Watertown

Secretary:

Roy Gjerde, Vienna

Treasurer:

John Rider, Henry

Directors:

Benjamin Fleming, Florence

Jay Foster, Garden City

Russell Hurlbert, Raymond

Michael Meland, Webster

David Warkenthien, Clark

Management Staff

Dave Eide, Manager

Tammy Popham, Staff Assistant

Tasha Torgerson, Office Services

Manager

Jarod Suttan, Member Services

Manager

Jared Terhark, Distribution System

Manager

To report a power outage:

1-844-968-1976

Office Hours:

Mon. - Fri., 8 a.m. to 4:30 p.m.

Codington-Clark Electric Cooperative Connections is published monthly by Codington-Clark Electric Cooperative, PO Box 880, 3520 9th Ave SW, Watertown, SD 57201-0880. Electric cooperative members devote 50 cents from their monthly electric payments for a subscription. Non-member subscriptions are available for \$12 annually. Periodicals Postage Paid at Watertown Post Office, Watertown, SD 57201 and at additional mailing offices.

POSTMASTER: Send address changes to: Codington-Clark Electric Cooperative Connections, PO Box 880, 3520 9th Ave SW, Watertown, SD 57201-0880; telephone (605) 886-5848

www.ccelectric.coop

Codington-Clark Electric Cooperative, Inc. is an equal opportunity provider and employer.

Tree Trimming Safety

Trees are majestic, beautiful and good for the soul. But we also know that our members depend on us to deliver reliable power to their homes and businesses. South Dakota's electric cooperatives strive to balance maintaining the beautiful surroundings we all cherish with ensuring reliable electricity. You might not realize it, but there are several benefits to regular tree trimming.

Keeping power lines clear of overgrown vegetation improves service reliability. After all, we've seen the whims of Mother Nature during severe weather events with fallen tree limbs taking down power lines and utility poles. While many factors can impact power disruptions, about half of all outages nationally can be attributed to overgrown vegetation.

Overgrown vegetation and trees also pose a risk to power lines. For example, if trees are touching power lines in our members' yards, they can pose grave danger to families. If children can access those trees, they can potentially climb into a danger zone. Electricity can arc, or jump, from a power line to a nearby conductor like a tree. A proactive approach also diminishes the chances of fallen branches or trees during severe weather events that make it more complicated and dangerous for line workers to restore power.

If trees and other vegetation are left unchecked, they can be-

come overgrown and expensive to correct. A strategic vegetation management program helps keep costs down for everyone.

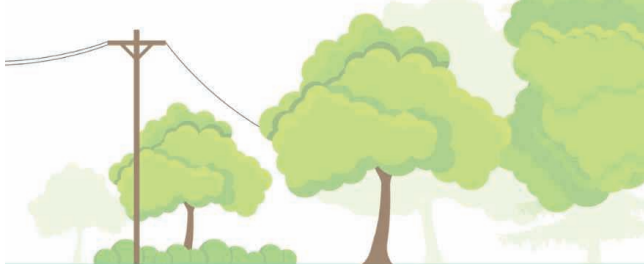
When it comes to vegetation management, there are ways you can help too. When planting new trees, make sure they're planted a safe distance from overhead power lines. Medium-height trees (40 ft. or smaller) should be planted at least 25 ft. from power lines. Taller trees (over 40 ft.) should be planted at least 50 ft. from power lines. You can also practice safe planting near pad-mounted transformers. Plant shrubs at least 10 ft. from the transformer door and 4 ft. from the sides. If your neighborhood has underground lines, remember to contact 811 before you begin any project that requires digging.

Additionally, if you spot an overgrown tree or branch that's dangerously close to overhead lines, please contact your local electric cooperative.

We have deep roots in our community, and we love our beautiful surroundings. It takes a balanced approach, and our vegetation management program is a crucial tool in ensuring service reliability.

BENEFITS OF TREE TRIMMING

- ✓ Improves service reliability
- ✓ Speeds up restoration time
- ✓ Keeps crews & communities safe



"Watch for overhead power lines."

Jacob Ymker, Age 10

Jacob reminds readers to watch out for overhead power lines. Great job, Jacob! Jacob's parents are Mark and Marion Ymker from Armour, S.D.

Kids, send your drawing with an electrical safety tip to your local electric cooperative (address found on Page 3). If your poster is published, you'll receive a prize. All entries must include your name, age, mailing address and the names of your parents. Colored drawings are encouraged.

Heart-Warming DESSERTS

APPLE BREAD

Ingredients:

- 1/2 cup brown sugar
- 1 1/2 tsps. cinnamon
- Mix in small dish & set aside.*
- 2 eggs (room temperature)
- 1/2 cup sugar
- 1 tsp. vanilla
- 1/2 cup melted butter or margarine
- Mix together in a bowl and add:*
- 1 1/2 cups flour
- 1 tsp. baking powder
- 1/2 tsp. baking soda
- 2 cups chopped apples

Method

Pour 1/2 of the batter into a greased and floured bread pan. Sprinkle 1/2 of the cinnamon and sugar mixture over it. Add remaining batter and top with remaining cinnamon sugar mixture.

Bake at 350° for 45-60 minutes.

Grace Klein
Sioux Valley Energy

PUMPKIN CHEESECAKE DESSERT

Ingredients:

- 1 cup heavy whipped cream
- 8 oz. cream cheese, whipped
- 1/3 cup sugar
- 1/2 cup brown sugar
- 1 can pumpkin puree
- 1 tbsp. pumpkin pie spice
- 1 tsp. vanilla
- 1 pkg. cheesecake pudding mix

Method

Beat 1 cup heavy whipped cream and set aside.

In a separate bowl, mix and beat the cream cheese, sugar, brown sugar, pumpkin puree, pumpkin pie spice, vanilla, and cheesecake pudding mix.

Fold the whip cream into this mixture and spread in a graham cracker crust

Refrigerate two hours before serving plus add a spray of whip cream and sprinkle cinnamon on top.

(Optional) add chopped pecans or walnuts.

Susan Forma
Union County Electric

CHERRY COCONUT BARS

Ingredients:

Crust

- 1 cup flour, sifted
- 1/2 cup butter
- 3 tbsps. powdered sugar

Mixture

- 2 eggs, slightly beaten
- 1 cup sugar
- 1/2 tsp. baking powder
- 1/4 cup flour
- 1/4 tsp. salt
- 1 tsp. vanilla
- 3/4 cup chopped nuts
- 1/2 cup coconut
- 1/2 cup red maraschino cherries, quartered

Method

Mix together flour, butter and powdered sugar. Spread in 8" square pan. Bake at 350° for 20-25 minutes or until it is a delicate brown.

In a bowl, mix in the remaining ingredients in the order given: eggs, sugar, baking powder, flour, salt, vanilla, chopped nuts, coconut, maraschino cherries.

Spread this mixture over the crust and bake again for 25-30 minutes. cool and cut into squares.

Barbara Anderson
Lake Region Electric

Please send your favorite recipes to your local electric cooperative (address found on Page 3). Each recipe printed will be entered into a drawing for a prize in December 2025. All entries must include your name, mailing address, phone number and cooperative name.

Picture by Elena Veselova from Shutterstock

Wood and Pellet Stove Efficiency Upgrades



Miranda Boutelle
Efficiency Services
Group

There is something special about the heat of a fire. It's cozy, comforting and a heat source for households across the country. Whether it provides primary or supplemental heat, a wood or pellet stove must operate safely and efficiently.

Here are some signs your stove may need to be replaced, according to the United States Environmental Protection Agency (EPA):

- You often smell smoke in the house with all the windows closed. Smoke can harm heart and lung health, especially among children and older adults.
- Smoke comes out of the chimney more than 15 minutes after a cold start or reload.
- Watery eyes and stuffy noses are common in your household when operating the wood stove.
- You must continually feed the stove with wood.

The EPA recommends replacing wood stoves manufactured before 1990 with cleaner, more efficient models. This can save you money and make your home safer by reducing fire risk and improving indoor air quality. It also reduces outdoor air pollution. If the back of your stove doesn't have an EPA label, it's likely more than 30 years old.

Next, start comparing equipment to find the best fit using the EPA Certified Wood Stove Database. It provides a list of wood and pellet stoves with efficiency ratings, sizes, heat outputs and other details. Local retailers can help you, too. Work with a reputable dealer who can explain the features most important to you. Don't forget to ask about the highest efficiency models.

Here are some things to consider when choosing

a new wood or pellet stove.

Modern wood stoves require less wood, produce less ash and emit almost no smoke. They come in catalytic and noncatalytic options. In catalytic models, smoke gases and particles are burned in a coated ceramic honeycomb, thereby increasing burn time and reducing air pollution. The operation of noncatalytic models is more standard. According to the U.S. Department of Energy, new catalytic wood stoves have efficiencies of up to 83% higher heating value – or amount of heat released – while noncatalytic models are typically in the 65% to 75% range.

A pellet stove is another option to consider. It burns compressed pellets made of wood or other biomass materials. Like a wood stove, there are free-standing units or inserts. It can burn cleaner and doesn't require hauling wood. Pellets are loaded into the hopper, which feeds them into the combustion chamber for burning. Most pellet stoves use electricity for the hopper and a fan to push warm air into the room. Plan to power them during an outage, if needed. Some models come with battery backup. An EPA-certified pellet stove has a 70% to 83% higher heating value.

Make sure the wood or pellet stove you select is properly sized for your home and heating needs.

Consider the cost of the fuel source – whether you have to buy wood, harvest it yourself or stock up on a specific type of pellet. Reduce fuel consumption and smoke by burning wood that is dry and seasoned, meaning it is split, covered and aged for at least six months. Do not burn trash or treated lumber indoors. It can create indoor air pollution and damage your wood stove. Burning softwood can lead to creosote buildup, which can cause chimney fires.

Installation by a certified technician ensures the job is done right, preventing chimney fires and indoor smoke. Have the stove cleaned and inspected by a professional annually. Also, install carbon monoxide detectors. Follow the manufacturer's specifications for burning materials and operation.

If your stove is acting up or not supplying enough heat for your home, consider upgrading to a new model to increase efficiency and keep your home comfortable this winter.

KINGBIRD COFFEE

Your Local Coffee Shop

Jocelyn Johnson

jocelyn.johnson@sdrea.coop

Tucked away in the heart of Brandon, S.D., sits Kingbird Coffee – a cozy, vibrant coffee shop built on the foundation of generosity and community spirit. Kingbird Coffee has blossomed from a simple act of love into a cherished gathering place that embodies hometown values and creative flair. It all began as a surprise.

“Technically, my wife, Jessica, owns it,” said Michael Gross, who purchased the coffee shop as a gift to his wife. “It was an impulse buy,” recalled Michael with a chuckle.

At the time, Michael felt his hometown lacked a proper coffee shop – a local hangout where neighbors could linger over coffee, connect and find a sense of belonging.

“Our inspiration is to be able to give back to the community,” Michael said.

True to that inspiration, Kingbird Coffee radiates generosity from its very core. Since opening, every cent of profit has gone directly back into the community – nurturing local events, student activities and charitable causes.

“My wife and I have never taken any money from the coffee shop,” Michael explained. “Everything we have made over the years has gone back into the community to support events or kids.”

Their commitment to fostering community shines through ongoing innovation and engagement. Now, the team is preparing to launch new extended hours, accompanied by themed nightly events – each designed to cultivate connections and celebrate local interests.

“We’re planning on having a different event every night,” Michael said. “Like Monday might be advanced board games. Tuesday might be about meeting a local pastor. Wednesday could be kids’ crafts night.”

This effort signifies Kingbird Coffee’s continual quest to be more than just a coffee shop: it is a place where everyone can find something to enjoy, every night of the week.

The eclectic atmosphere of the coffee shop invites you to stay awhile. Couches and nooks make for perfect reading corners, board games beckon to the playful, and even a whimsical swing under the stairs welcomes imaginative children.

“It’s just a fun little quiet vibe,” Michael described. “We have little hidden nook areas underneath the steps and a little swing where kids can go and hang out... there’s ‘take a book, leave a book,’ and board games. It’s just a fun place.”

Here, creativity isn’t just encouraged – it’s essential. While the owners handle behind-the-scenes work, they credit the employees and a dedicated events manager for shaping the everyday magic that keeps patrons returning.



Photo by Kingbird Coffee

Kingbird Coffee’s devotion to local flavor extends to every product sold. Beans are sourced from Parable Coffee Roasting Co., a local roaster in Tea, S.D. But the commitment to homegrown doesn’t stop with coffee. Local honey, jewelry, bison jerky, pizza, even handmade stockings from coffee bags, and flowers from a local florist – each item tells a story of community partnership. Artists hang their work for free, keeping a portion of sales and donating proceeds to local art initiatives. On weekends, the shop welcomes pop-up boutiques, allowing small business owners an affordable, supportive venue.

Signature drinks bring history to the present. The beloved “Billy King” remains on the menu in honor of Billy, the shop’s founder and namesake.

“We kept everything the same as if he’s still at it. Billy created it, and he’s a good friend of mine,” says Michael.

Such continuity gives regulars – and new customers – a sense of belonging and nostalgia.

Cultivating connections goes well beyond commerce. Employees past and present share a special bond, growing from high school baristas into college students and, often, friends for life.

“People don’t quit. They just...love it because they have the freedom to experiment and to make drinks,” he said, noting the murals and memories that fill the walls.

When asked to describe the shop’s personality, Michael laughs, “A crazy, wild teenager...you never know what’s gonna happen.” The unpredictable, energetic spirit is exactly what makes Kingbird Coffee so beloved – a hub that welcomes everyone, surprises often and gives back always.

For Kingbird Coffee, community isn’t a slogan – it’s a way of life, brewed fresh daily for everyone who walks through the door.



The South Dakota State Capitol
in Pierre, S.D.
Photo by Frank Turner

CO-OPS AT THE CAPITOL EVERY VOICE COUNTS

Frank Turner

frank.turner@sdrea.coop

Electric cooperatives carry a wide range of responsibilities to the members they serve. Beyond keeping the lights on, co-ops represent their communities, focus on member needs and help strengthen the places they call home. But behind the scenes, cooperatives also stay actively involved in legislative discussions to stay engaged in the decisions that shape how they serve their members.

According to Steve Barnett, general manager of the South Dakota Rural Electric Association, legislative efforts help protect reliable electricity, keep costs manageable and support rural communities across South Dakota.

“While it’s important that we stay involved in the topics that are relevant to our industry, it’s really about sharing our values and telling our story,” Barnett said. “Being involved means being engaged and aware of the challenges and issues coming up in the 2026 Legislative Session,”

In addition to SDREA’s internal

leadership, legislative efforts are supported by the association’s lobbying team in Pierre, led by Darla Pollman Rogers of Riter Rogers LLP. Rogers and her colleague, Ellie Bailey, have been involved with SDREA’s legislative work for more than two decades.

“A key component of this work involves relationship building with legislators to establish trust and credibility,” Rogers said.

Rogers noted that member engagement strengthens the cooperative voice during session and throughout the year. “The grassroots approach is huge for co-ops,” she said. “Hearing from members across the state and from different cooperatives helps strengthen our overall impact.” Rogers added that one of the best ways members can get involved is by getting to know their local legislators or attending Co-op Day at the Capitol to observe the process firsthand.

With the next session approaching, several topics are already drawing the attention of not only electric cooperatives but utilities across the

state. One of the proposals SDREA is following closely is Rep. Kent Roe’s data center bill, identified as Draft HB 31.

“We’re seeing an increase in interest from large data center developers looking to site facilities in cooperative service territory,” said Chris Studer, chief member and public relations officer at East River Electric Power Cooperative, a wholesale power supply cooperative which serves distribution co-ops in eastern South Dakota and western Minnesota. “We have been providing input on the data center bill to make sure the law would fit within our process and require data centers to invest in generation and transmission infrastructure to serve them, so we can protect our current cooperative consumers from the risk of building generation to serve these large consumers. At the end of the day, we’re not going to put our member-owners at risk, and engaging with lawmakers working on that issue is very important to our cooperative network.”

The association has also been working

with investor-owned utilities on wildfire mitigation legislation, which stands out as another priority for South Dakota cooperatives.

“Wildfire risk is a growing concern, and this proposal gives utilities a clear, consistent way to plan ahead. At its core, this legislation is about preparedness – making sure utilities have a plan and have reviewed it with their governing authority. By strengthening infrastructure, improving vegetation management, and coordinating closely with communities, the framework helps protect public safety while supporting the reliable service South Dakotans depend on,” Black Hills Electric General Manager Walker Witt said.

Cooperative members also have an important role in legislative advocacy. Their engagement helps ensure that rural needs and perspectives reach decision makers. Barnett encouraged members to stay active by reaching out to local lawmakers in their districts and attending local legislative forums and cracker barrels. These are formal town hall style gatherings where legislators answer questions and update the community.

“Members can contact legislators in their respective districts via email or by telephone,” Barnett said. “Attending cracker barrels is also a good way to stay engaged. These opportunities give members a chance to hear updates, ask questions, and share how policy decisions affect their communities.”

Barnett also noted the importance of staying alert during the legislative process, particularly when a bill is significantly amended. He explained that when a bill gets “hog housed,” it means it has been changed so much that the original version is no longer recognizable. “A hog housed bill is changed or amended significantly, to the point where a person may change their position on the bill,” he said. “Tracking these changes is essential to understanding the real impact a proposal may have if it becomes law.”

Barnett said SDREA will continue to represent the interests of both cooperatives and rural communities across the state. At the end of the day, it’s all about providing dependable electricity and keeping the lights on.



Gov. Larry Rhoden takes a picture with members of the electric cooperative network at Co-op Day at the Capitol last February.

Photo by Jocelyn Johnson

STAYING INVOLVED

Co-op Day at the Capitol

Electric cooperatives’ efforts to engage local legislators extend far beyond traditional lobbying. Every February, cooperatives from across the state gather for a light-hearted dinner at the South Dakota State Capitol to break bread with lawmakers, provide attendees industry updates and sit in on legislative committee meetings.

Last year, South Dakota cooperatives continued their time-honored tradition of serving pulled pork sandwiches and cowboy beans prepared by Ken Gillaspie, who formerly served as a director for East River Electric and as board president for Oahe Electric, and Roger Crom, a former loss control manager at SDREA.

The next Co-op Day at the Capitol is scheduled for Feb. 17, 2026.

Legislative Banquets

In addition to Co-op Day at the Capitol, select electric cooperatives across the state host legislative banquets as a means of communicating the latest legislative environment with both their members and local lawmakers. Many times, these events provide a free meal to attendees and include updates on both the successes and challenges for the co-op.

Reach out to your local cooperative to learn more about local Legislative Banquets, Co-op Day at the Capitol or the latest legislative news affecting cooperatives. The co-op network is more than happy to engage.

\$6,500 in Scholarships Available

Codington-Clark Electric, along with its partners, is offering \$6,500 in college and technical school scholarships for the 2026-27 school year.

Additional information and application forms are available from Codington-Clark's website www.ccelectric.coop or from area high schools.

The deadline for all scholarship applications is 4:30 p.m. February 13, 2026.

Codington-Clark Electric Scholarships

Codington-Clark Electric will award (4) \$500 scholarships and again partner with CoBank to award (2) \$1,000 scholarships for the 2026-27 school year. The program is designed to recognize certain academic achievements by children of member-consumers of Codington-Clark Electric and to encourage students to attend a South Dakota post-secondary institute.

The scholarships must be used for educational costs, and the student must enter school in the fall of the school year for which the scholarship is given. The applicant must be a student who is planning to enroll in a full-time undergraduate course of study at an accredited, two-year, or four-year college, university, or vocational/technical school located in South Dakota. Codington-Clark Electric will pay scholarships after the completion of the first semester. Checks will be made payable to the students and will be distributed by Codington-Clark Electric.

One application covers both scholarships.

Basin Scholarship

Codington-Clark Electric will partner with Basin Electric Power Cooperative to offer (2) \$1,250 scholarships for the 2026-27 school year.

Applicants must be students who are enrolling or planning to enroll in a full-time graduate or undergraduate course of study at an accredited college, university, or vocational/technical school for the 2026-27 school year.

The awards are part of the Rural Electric Cooperative Scholarship Program developed and funded by Codington-Clark Electric's power supply partner, Basin Electric Power Cooperative. Basin Electric operates a generation fleet that produces about 75 percent of the electricity used by Codington-Clark Electric members. Each of Basin Electric's member cooperatives will award \$2,500 in scholarships. That means two students whose parents are Codington-Clark Electric members will win a \$1,250 scholarship.

Applications will be considered by Codington-Clark Electric and then submitted to Basin Electric for scholarship distribution.

Scholarship checks will be made payable to the student's college, university, or technical school and will be distributed by Basin Electric in August.

2026 Operation Round Up Funding Applications Being Accepted

The Codington-Clark Electric Board of Directors made the decision to implement the Operation Round-Up program in adherence to the cooperative principle "Concern for Community". Through the program Co-op members volunteer to "round up" the amount owed on electric bills to the next highest dollar amount and contribute the change to the Operation Round Up Fund. The purpose of the program is to provide charitable contributions that promote the welfare of people in the community and improve their quality of life.

Since 2011, numerous Codington-Clark members and employees have opted to participate in the program and have generously contributed to the fund. If you are interested in applying for funds, please call 605-886-5848, stop by the office to pick up an application or go online to www.ccelectric.coop, click on the community tab and look for Operation Round Up. Any application that would positively affect the general welfare of the community will be considered. The deadline for applying is February 16, 2026.

Cooper Pommer, Named Touchstone Energy Scholar of the Week

Cooper Pommer, a Willow Lake High School senior, was selected as the Touchstone Energy Scholar of the Week for November 30 and featured on Dakota News Now.

Cooper's parents are Jarrod & Darcy Pommer, rural Willow Lake.

Touchstone Energy Cooperatives (including Codington-Clark Electric Co-op) and Dakota News Now have joined together to recognize the achievements of high school seniors throughout the region. "Touchstone Energy Scholar of the Week" has been celebrating the achievements of high school seniors since 2002.

Recipients are highly motivated high school seniors who excel in the classroom and community. This program was founded on the four pillars of Touchstone Energy: Integrity, Accountability,



Cooper Pommer, Willow Lake High School.

Innovation, and a Commitment to Community.

For being selected, Cooper received \$250 and a chance to win a \$500 or \$1,000 scholarship to be awarded at the Touchstone Energy Scholar of the Year banquet.



Codington-Clark Electric Co-op Privacy Notice

Codington-Clark Electric Cooperative Inc. has always been committed to protecting the privacy and security of personal information we collect from or about our member-consumers in the normal course of business. We are providing this notice to you to assure you of our commitment to maintaining the privacy of such information.

Collection of Information

We may collect nonpublic personal information about you from the following sources:

- Information we receive from you on applications or other forms;
- Information about your transactions with us, our affiliates or others; and
- Information we receive from third parties such as consumer reporting agencies.

Disclosure of Information

We do not disclose any nonpublic personal information about our current or former member-consumers to anyone, except as permitted by law.

Safeguarding Information

We restrict access to nonpublic personal information about you to those employees who need to know the information to provide products or services to you. We maintain physical, electronic and procedural safeguards that comply with federal regulations to guard your personal information.

For any information regarding our privacy policy, please contact:

Codington-Clark Electric Cooperative Inc
3520 - 9 Ave SW, PO Box 880
Watertown, SD 57201-0880
Phone: (605) 886-5848



South Dakota law allows electric cooperatives to place poles along public rights-of-way without needing an easement. Shown here, East River Electric's transmission lines north of Pierre are built within the right-of-way. In cases where the rights-of-way are crowded, have obstacles, or are otherwise not suitable for poles or line work, a co-op may seek an easement outside of the right-of-way.
Photo by Jacob Boyko

EASEMENTS BRING SAFETY, RELIABILITY

Why More Room Makes Sense for Co-ops, Line Crews & Members

Jacob Boyko
jacob.boyko@sdrea.coop

Serving rural members means maintaining thousands of miles of power line – and finding the space to safely build and access it. At your local electric cooperative, building, maintaining and repairing thousands of miles of infrastructure is a logistical challenge, but each and every piece of the system has its role in a functioning and reliable electric grid.

That's why easements, or agreements to use and access private land, are essential for co-ops and their members. At East River Electric Power

Cooperative, the generation and transmission co-op serving 25 member distribution systems in South Dakota and Minnesota, Engineering and Planning Services Manager Jon Aus works directly with co-op members to get easements for power lines.

In 2025, most cooperatives prioritize building lines along the public right of way – the area between the road and fence lines along roadways – instead of along quarter lines like they have historically, back when rights-of-way were cluttered with telephone and other overhead lines.

“That’s where we like it from an access and maintenance perspective,”

Aus said of rights-of-way. “Nowadays, when we develop a route for a line, we pick the roads we want to zigzag down to get from Point A to Point B.”

Placing infrastructure along roads improves accessibility for crews and speeds up outage response time, especially when mud or snow are a factor, Aus added. But the trade offs are a workspace limited to the shoulder and ditch and overall limited access to the infrastructure.

That’s where easements make all the difference. When a co-op member allows an easement, the co-op will set poles back just several more feet away from the road right-of-way onto private land, and crews can cross behind the fence when they need to access the poles. The impact on private land is minimal, but it’s a massive benefit for the line crews.

“Having an easement allows crews to work on the backside of the structures,” Aus said. “If you don’t get an easement and you don’t have any access rights, they’re stuck working everything from the ditch and the roadside.”

Engineers are meticulous when mapping routes for new lines, Aus added, noting the lengthy process for engineers as they consider pole placement, obstacles, hazards and community impact.

“At the onset of any project, we’re evaluating the impact of our routing,” Aus continued. “Public impact is right up there on our priorities along with reliability and maintenance. We don’t go down routes we foresee to have challenges with public impact.”

Distribution cooperatives see similar challenges on the ground. In southwest South Dakota, Black Hills Electric Cooperative System Coordinator Jesse Sorensen aims to manage a system that’s not only reliable and affordable, but also built on cooperation with members.

“Very rarely do we have someone reject giving an easement,” he said. “We’ve had very good luck sitting down with members and explaining everything to them that there are hundreds – if not thousands – of landowners that allowed easements so we could get electricity to this property.”

He continued, “The biggest concerns from landowners are about losing their trees or the aesthetic value of their property, and we’ll work with landowners by rerouting lines to prevent cutting prize trees or installing lines in prime views.”

At East River Electric, Aus’ team fields similar questions from landowners, usually concerning specific pole placement and whether poles will interfere with field access, an approach or operation of large machinery. He says it’s usually something the engineers can accommodate because ultimately, co-ops want to leave members’ land as good or better than they found it.

“We’ll even work with landowners to pay to replace any trees we have to remove if we obtain an easement from them,” Aus said.

As the co-op steadily grows and expands its transmission system, East River Electric General Counsel Danny Brown stresses that the co-op relies on voluntary easements, and in its 75-year history has never used eminent domain to obtain an easement.

“Eminent domain is not something we ever want to use,” Brown explained. “We try to educate and work with the property owners the best we can. At the end of the day, an easement is voluntary, and if we can’t make it work from the right of way, we have to start thinking about changing our route.”

But opting for alternate, less-efficient routes is a concession that can severely impact system reliability and leads to a higher price tag for co-op members to pay. Fortunately, Aus and Sorensen said most landowners understand the value of working with their cooperative for themselves and their community.

“There have been several times when landowners have said, ‘Absolutely, bring that line through here,’” Aus recalled. “They want to improve their reliability, or they know that they just need more electricity in that area for whatever they might be doing on their property. Most of the time we’re welcomed with open arms.”

That willingness helps keep cooperative power moving across the countryside.



When a co-op obtains an easement to build a line along a road right-of-way border, the line is placed several feet away from the right-of-way border. In this photo, the right of way border is about at the fence line, with the poles placed several feet behind the fence.

On this route, East River Electric has an easement for 30 feet behind the fence line for when line crews need to maintain or repair the line, giving crews more room to work and better access to the structures.

Photo submitted by East River Electric.

WORKING TOGETHER IS POWERFUL



Understanding the Three-Tier Co-op Structure

Jacob Boyko

jacob.boyko@sdrea.coop

What Is an Electric Cooperative? (Tier 1: Distribution Co-ops)

An electric cooperative is a non-profit, member-owned utility governed by a member-elected board of directors. Co-ops are different from a typical utility because they don't report to shareholders; a co-op's responsibility is solely to the people it serves.

Member-ownership keeps the co-op focused on serving the interests of the community and maintaining low costs to members. Co-ops employ democratic principles; each member has one vote, which keeps control local and shields the co-op and members from outside interests.

Your local electric cooperative owns and maintains distribution power lines to serve members throughout its territory. While electric cooperatives' territories cover almost all of South Dakota, most of the state's population lives in cities and small towns and purchase electricity from a city-owned municipal power system or a for-profit investor-owned utility.

Most of the electric distribution cooperatives in South Dakota were organized by members beginning in the 1930s and 1940s to serve the rural areas that investor-owned utilities determined would not be profitable enough to be worth serving.

Rural residents formed co-ops, going

door-to-door collecting \$5 sign-on fees – a lot of money at the time – from their neighbors to kickstart the fledgling co-ops. They applied for loans from the Rural Electrification Administration to begin construction, and by the early 1950s, most rural South Dakotans were enjoying amenities made possible by electricity.

Who Supplies My Co-op's Power? (Tier 2: Regional G&Ts)

East River Electric Power Cooperative in Madison and Rushmore Electric Power Cooperative in Rapid City are generation and transmission (G&T) cooperatives that sell electricity to a total of 27 distribution systems in South Dakota.

East River sells electricity to 19 member systems located in eastern South Dakota and six member systems in western Minnesota, while Rushmore sells electricity to eight member systems: seven located in western South Dakota and Cam Wal Electric Cooperative serving Campbell and Walworth counties in eastern South Dakota.

Both East River and Rushmore are governed by a board of directors comprised of directors from the distribution co-ops. Therefore, each distribution co-op receives one vote on its respective G&T's board.

Beyond selling electricity, East River and Rushmore assist their member systems in other areas; East River builds and maintains transmission systems to serve its member systems and offers support for information technology, marketing, public relations and economic development. Rushmore also offers marketing, PR and IT support, along with engineering services.

Two co-op systems in South Dakota are affiliated with neither East River nor Rushmore. Rosebud Electric Cooperative, based in Gregory, and Grand Electric, based in Bison, are part of District 9 – a collection of other distribution cooperative systems in Minnesota and North Dakota that purchase their energy from multiple sources rather than from a single supplier.

Who generates my electricity? (Tier 3: Basin Electric)

Rushmore Electric, East River Electric, and District 9 systems including Rosebud Electric and Grand Electric purchase energy from Basin Electric Power Cooperative, a G&T cooperative based in Bismarck, North Dakota.

Just like the regional G&Ts it serves, Basin is governed by a board of directors representing its member systems. There are 11 directors on Basin's board, and they know the energy industry inside and out – after all, to serve on the Basin board, the directors must also serve on their local co-op's board as well as the regional G&T's board, and are elected by their colleagues to represent the co-op, board, and its members.

Currently, Mike McQuiston of the Fort Pierre area represents his local co-op, West Central Electric Cooperative, on Rushmore's board, and represents Rushmore on Basin's board.

Kermit Pearson of the Lake City area represents his local co-op, Lake Region Electric Association, on East River's board, and represents East River on Basin's board.

The cooperative systems that comprise District 9 also elect a director from

a District 9-affiliated co-op to represent them on Basin's board. Wayne Peltier from Minnesota Valley Electric Cooperative in Montevideo, Minn., represents Rosebud, Grand and the other District 9 co-ops on Basin's board.

Basin Electric was formed in 1961 by electric co-ops in the upper Midwest to generate and transmit electricity exclusively for cooperative systems to purchase. The system has grown to serve North Dakota, South Dakota, Nebraska, Minnesota, Iowa, Montana, Wyoming, Colorado, and New Mexico.

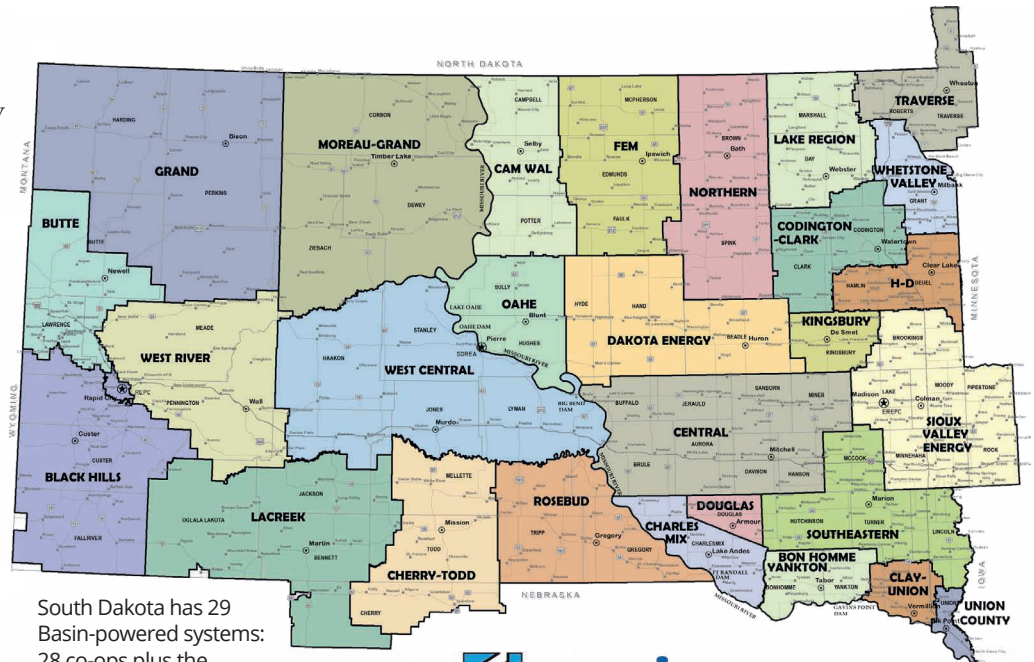
Basin Electric generates electricity using its owned and leased generation assets, which include coal, natural gas, solar, wind, oil and waste heat, with a maximum generating capacity of about 8,500 megawatts.

Other Generation: Western Area Power Administration

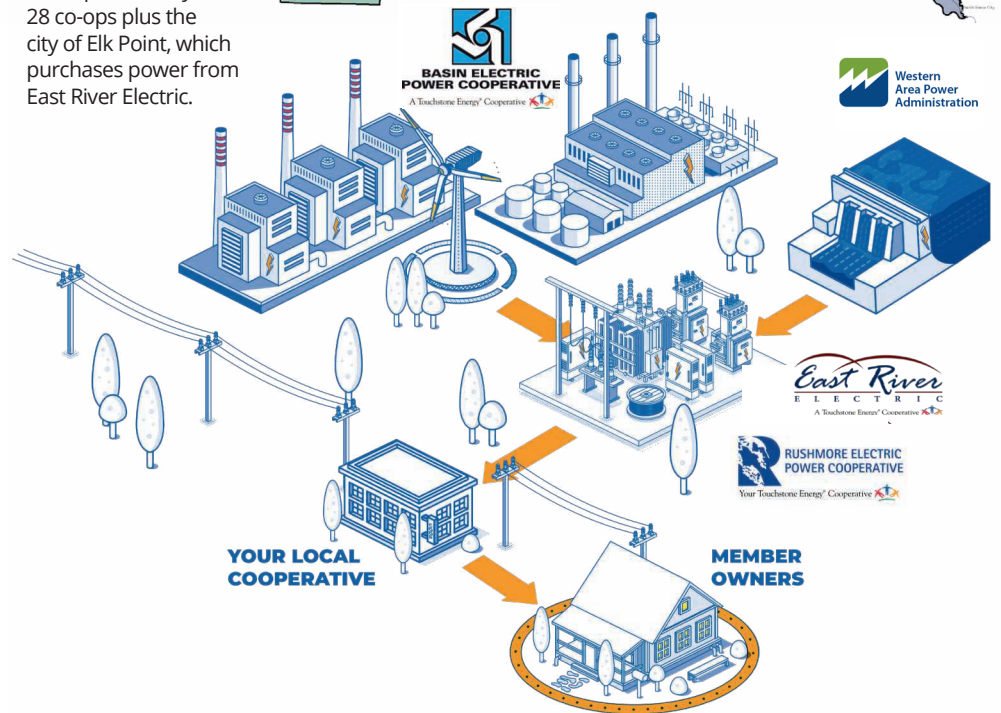
East River, Rushmore and the District 9 systems also purchase an allocated amount of electricity from the Western Area Power Administration. WAPA is the power marketing administration under the U.S. Department of Energy that markets and transmits power from the U.S. Army Corps of Engineers-operated Missouri River dams and other generators in the western U.S.

WAPA purchases make up about 18% of East River Electric and 12% of Rushmore Electric's purchases, respectively. District 9 systems also purchase some of their electricity directly from WAPA.

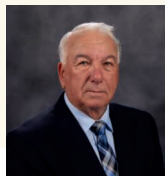
Each year, WAPA transmits about 25,000 gigawatt hours of electricity across its 17,000-circuit mile transmission system. WAPA serves a 15-state region that includes North Dakota, South Dakota, Minnesota, Iowa, Wyoming, Montana, Nebraska, Kansas, Colorado, Utah, Texas, New Mexico, Arizona, Nevada and California.



South Dakota has 29 Basin-powered systems: 28 co-ops plus the city of Elk Point, which purchases power from East River Electric.



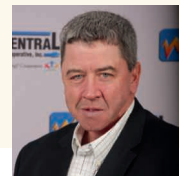
Basin Electric Directors Representing South Dakota



Kermit Pearson
East River, Lake Region
Submitted Photo



Wayne Peltier
District 9, Minnesota Valley
Submitted Photo



Mike McQuiston
Rushmore, West Central
Submitted Photo

REGISTER TO WIN!

Bring this coupon and mailing label to the Touchstone Energy® Cooperatives booth at the Black Hills Stock Show & Rodeo to win a prize!

Your Phone Number: _____

Your E-mail Address: _____



UNTIL JAN. 6

Garden Glow

5-9 p.m. (Closed Dec. 24-25, Jan. 1)

SDSU McCrory Gardens

Brookings, SD

www.sdstate.edu/mccrory-gardens

Photo Courtesy of Travel South Dakota

To have your event listed on this page, send complete information, including date, event, place and contact to your local electric cooperative. Include your name, address and daytime telephone number. Information must be submitted at least eight weeks prior to your event. Please call ahead to confirm date, time and location of event.

UNTIL DEC. 26

Christmas at the Capitol

8 a.m.-10 p.m. (Holidays Included)

South Dakota State Capitol

Pierre, SD

605-773-3178

christmasatthecapitol.sd.gov

UNTIL DEC. 30

Chamberlain Oacoma Festival of Trees

South Dakota Hall of Fame

1480 S. Main St.

Chamberlain, SD

DEC. 20-21, 23-24, 27-28

1880 Train Holiday Express

Hot Chocolate, Santa

Hill City, SD

www.1880train.com

605-574-2222

DEC. 31

New Year's Eve Bash

Doors Open at 5:30 p.m.

American Legion

Sioux Falls, SD

Tickets: 605-336-3470

JAN. 10

Knights of Columbus Coats for Kids Bowling Tournament

1 p.m.

Meadowood Lanes

3809 Sturgis Rd.

Rapid City, SD

JAN. 22

Gentleman's Quartet: Instrumental

7 p.m.

Johnson Fine Arts Center

Aberdeen, SD

JAN. 23-24

Pro Snocross Races

Deadwood, SD

605-578-1876

JAN. 30

Box Elder Ball

6 p.m.-8 p.m.

Box Elder Events Center

Box Elder, SD

605-390-9341

JAN. 20

Prohibition & the Pig

Lake Cty. Museum Fundraiser;

Prohibition-Era Bootlegging

6 p.m.-7:30 p.m.

\$60 per ticket

The Office Bar & Grill

Madison, SD

605-256-5308

JAN. 30

Shoot for a Cure

Aurora County Cancer Fundraiser

Plankinton, SD

JAN. 30-FEB. 7

Annual Black Hills Stock Show

Central States Fairgrounds

Rapid City, SD

www.centralstatesfairinc.com

605-355-3861

FEB. 1

The Great Lake County Hotdish Competition

11:30-1:30 p.m.

St. Thomas School Gym

Madison, SD

605-256-5308

FEB. 7-8

The Black Market/Formerly Benson's Flea Market

Sioux Falls, SD

605-332-6004

FEB. 13-16

12th Annual Frost Fest

Brookings, SD

605-692-7444

FEB. 20-22

Winterfest

Fireworks, Parade of Lights,

Bonfire, Snowshoeing

Lead, SD

www.leadmethere.com/winterfest

605-584-1100

Note: We publish contact information as provided. If no phone number is given, none will be listed. Please call ahead to verify the event is still being held.